

MAXIFLOW 2/2 ACETYLENE – DRUVA®TEC MANIFOLD

MANIFOLD WITH MANUAL QUICK-ACTING SHUT-OFF DEVICE | ACETYLENE LINE (BRASS) | 5m³ SERIES | TWO INLETS | SEMI-AUTOMATIC CHANGEOVER | ACCORDING TO ISO14114-2014

Manifold for use of Acetylene gas supply



TECHNICAL SPECIFICATION

- > Manual quick-acting shut-off device at inlet pressure side according to ISO 15615
- > Pressure regulator development and production according to the requirements of ISO 7291 including the Acetylene decomposition test
- > Complete manifold- Electrostatic chargeability test
 - Fulfill requirements according ISO 80079-36; IEC TS 60079-32-1 and German TRGS 727
 - Usable in EX-areas zones 1 and 2 for gases with explosion risk group I; IIA; IIB; IIC

TECHNICAL DATA – MANIFOLD

Inlet pressure:	25 bar
Outlet pressure:	1,5 bar adjustable
Nominal flow:	5 m ³ /h (max. 6 Acetylene cylinders are emptied at the same time)
Working temperature:	-20 °C to +60 °C
Weight:	12 kg
Inlet:	W21,8x1/14"LH male
Outlet process gas:	G 1/2" male (EN560)
Outlet relief valve:	M12x1 mm male
Leakage rate against atmosphere:	<10 cm ³ /h (23 °C; 1,013 bar absolute) compressed air
Test in production:	Tightness and function tests with synthetic air

TECHNICAL DATA – PRESSURE REGULATORS – BLOCK WITH TWO PRESSURE REGULATORS FIRST PRESSURE STAGE

Filter Inlet:	25 µm Stainless steel
Material gas wetted parts	
Body:	Brass
Diaphragm:	EPDM
Seat:	Chloroprene rubber
Poppet:	Brass
Display Inlet gauge:	40 bar
Display REED Contact gauge for part- no. 0768167 – Maxiflow 2/2CG:	40 bar
Test during development:	Type test in accordance with ISO 10297 Electrostatic chargeability test <ul style="list-style-type: none"> • Fulfill requirements according ISO 80079-36; IEC TS 60079-32-1 and German TRGS 727 • Usable in EX-areas zones 1 and 2 for gases with explosion risk group I; IIA; IIB; IIC

TECHNICAL DATA – PRESSURE REGULATORS SECOND PRESSURE STAGE

Inlet connection	G 5/8" male
Outlet connection	G 1/2" LH male
Filter Inlet:	100 µm Stainless steel
Material gas wetted parts:	
Body:	Brass
Diaphragm:	EPDM
Seat:	Chloroprene rubber
Poppet:	Brass
Display Inlet gauge:	40 bar
Display outlet gauge:	2,5 bar
Opening pressure relief valve:	1,75- 2,5 bar
Test during development:	Type test in accordance with ISO 10297 Electrostatic chargeability test <ul style="list-style-type: none"> • Fulfill requirements according ISO 80079-36; IEC TS 60079-32-1 and German TRGS 727 • Usable in EX-areas zones 1 and 2 for gases with explosion risk group I; IIA; IIB; IIC

TECHNICAL DATA – MANUAL QUICK-ACTING SHUT-OFF DEVICE

Max. working pressure:	25 bar
Safety pressure:	315 bar
Testing during product development and monitoring in production:	BAM type testing and production monitoring according to ISO 15615
Material gas wetted parts	
Body:	Galvenised steel
Ball:	Steel hard chrome plated
Gearshift:	Galvenised steel
Ball-, body-, spindle seal:	EPDM

TECHNICAL DATA SAFETY DEVICE ACCORDING TO ISO 5175 WITH INTEGRATED NON-RETURN VALVE, FLAME ARRESTER AND TEMPERATURE-CONTROLLED AFTERFLOW ARRESTER

Max. working pressure:	1,5 bar (Acetylene)
Opening pressure:	50- 70 mbar
Filter:	1x dust filter
Material of gas wetted metallic parts:	Brass
Material gas wetted spring:	1.4310

TECHNICAL DATA – BALL VALVE ON OUTLET PRESSURE SIDE

Material gas wetted parts	
Body:	Brass nickel-plated
Ball:	Brass hard chrome-plated
Ball seal:	PTFE
Gearshift:	EPDM
Nominal width (free passage)	13 mm
Max. working pressure:	1,5 bar

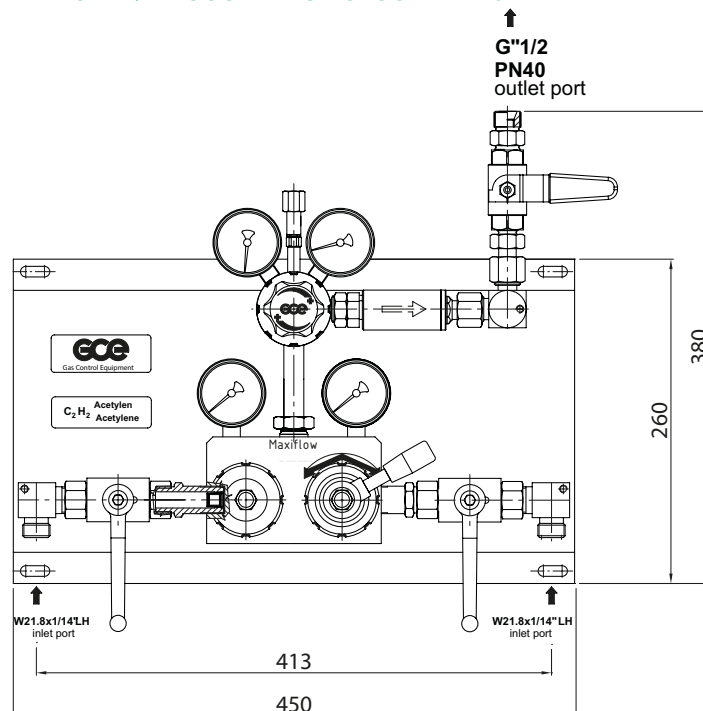
MOUNTING BRACKET

Dimensions (width x height x depth):	450 x 260 x 20 mm
Material:	Stainless steel

ORDERING INFORMATION

Part no.	Description	Gas	Inlet pressure	Outlet pressure	Inlet	Outlet
0768166	MAXIFLOW 2/2	Acetylene	25 bar	1,5 bar	W21,8x1/14"LH	G1/2" m
0768167	MAXIFLOW 2/2CG	Acetylene	25 bar	1,5 bar	W21,8x1/14"LH	G1/2" m

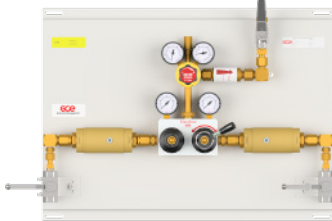
DIMENSION DRAWING – MAXIFLOW 2/2 ACCORDING TO ISO14114-2014



MAXIFLOW 2/2 AQASOD ACETYLENE – DRUVA®TEC MANIFOLD

MANIFOLD WITH AUTOMATIC QUICK-ACTING SHUT-OFF DEVICE | ACETYLENE LINE (BRASS) | 5m³ SERIES | TWO INLETS | SEMI-AUTOMATIC CHANGEOVER | ACCORDING TO ISO14114-2018

Manifold for use of Acetylene gas supply



TECHNICAL SPECIFICATION

- > Automatic quick-acting shut-off device according to ISO 15615 (AQASOD)
- > Pressure regulator development and production according to the requirements of ISO 7291 including the Acetylene decomposition test
- > Additional ball valves on inlet pressure side according to ISO 15615
- > Complete manifold- Electrostatic chargeability test
 - Fulfill requirements according ISO 80079-36; IEC TS 60079-32-1 and German TRGS 727
 - Usable in EX-areas zones 1 and 2 for gases with explosion risk group I; IIA; IIB; IIC

TECHNICAL DATA – MANIFOLD

Inlet pressure:	max. 25 bar
Outlet pressure:	1,5 bar adjustable
Nominal flow:	5 m ³ /h (max. 6 Acetylene cylinders are emptied at the same time)
Working temperature:	-20 °C to +60 °C
Weight:	11,4 kg
Inlet:	W21,8x1/14" LH male
Outlet process gas:	G 1/2" male (EN560)
Outlet relief valve:	NPT 1/4" female
Leakage rate against atmosphere:	<10 cm ³ /h (23 °C; 1,013 bar absolute) compressed air
Test in production:	Tightness and function tests with synthetic air

TECHNICAL DATA – PRESSURE REGULATOR – BLOCK WITH TWO PRESSURE REGULATORS OF FIRST PRESSURE STAGE

Filter Inlet:	25 µm Stainless steel
Material gas wetted parts:	
Body:	Brass
Diaphragm:	EPDM
Seat:	Chloroprene rubber
Poppet:	Brass
Display Inlet gauge:	40 bar
Display REED Contact gauge for F27310036 – Maxiflow 2/2CG AQASOD:	40 bar
Test during development:	Type test in accordance with ISO 10297 Electrostatic chargeability test <ul style="list-style-type: none"> • Fulfill requirements according ISO 80079-36; IEC TS 60079-32-1 and German TRGS 727 • Usable in EX-areas zones 1 and 2 for gases with explosion risk group I; IIA; IIB; IIC

TECHNICAL DATA – PRESSURE REGULATORS OF SECOND PRESSURE STAGE

Inlet connection:	G 5/8" male
Outlet connection:	G 1/2" LH male
Filter Inlet:	100 µm Stainless steel
Material gas wetted parts	
Body:	Brass
Diaphragm:	EPDM
Seat:	Chloropren-Kautschuk
Poppet:	Brass
Display Inlet gauge:	40 bar
Display outlet gauge:	2,5 bar
Opening pressure relief valve:	1,75- 2,5 bar
Test during development:	Type test in accordance with ISO 10297 Electrostatic chargeability test <ul style="list-style-type: none"> • Fulfill requirements according ISO 80079-36; IEC TS 60079-32-1 and German TRGS 727 • Usable in EX-areas zones 1 and 2 for gases with explosion risk group I; IIA; IIB; IIC

TECHNICAL DATA – AUTOMATIC QUICK-ACTING SHUT-OFF DEVICE

Max. working pressure:	25 bar
Safety pressure:	315 bar
Testing during product development and monitoring in production:	BAM type testing and production monitoring according to ISO 15615
Material gas wetted parts	
Body:	Brass
Valve piston:	Brass
Spring:	HS3/ND3
O-Ring:	EPDM
Seat material:	PTFE

TECHNICAL DATA SAFETY DEVICE ACCORDING TO ISO 5175 WITH INTEGRATED NON-RETURN VALVE, FLAME ARRESTER AND TEMPERATURE-CONTROLLED AFTERFLOW ARRESTER

Max. Working pressure:	1,5 bar (Acetylene)
Opening pressure:	50- 70 mbar
Filter:	1x dust filter
Material of gas wetted metallic parts:	Brass
Material gas wetted spring:	1.4310

TECHNICAL DATA – BALL VALVE ON OUTLET PRESSURE SIDE

Material gas wetted parts	
Body:	Brass nickel-plated
Ball:	Brass hard chrome-plated
Ball seal:	PTFE
Gearshift:	EPDM
Nominal width (free passage):	13 mm
Max. working pressure:	1,5 bar

MOUNTING BRACKET

Dimensions (width x height x depth):	685 x 500 x 20 mm
Material:	Stainless steel

ORDERING INFORMATION

Part no.	Description	Gas	Inlet pressure	Outlet pressure	Inlet	Outlet
F27310035	MAXIFLOW 2/2 AQASOD	Acetylene	25 bar	1,5 bar	W21,8x1/14"LH	G1/2" m
F27310036	MAXIFLOW 2/2CG AQASOD	Acetylene	25 bar	1,5 bar	W21,8x1/14"LH	G1/2" m

DIMENSION DRAWING – MAXIFLOW 2/2 ACCORDING TO ISO14114-2018

